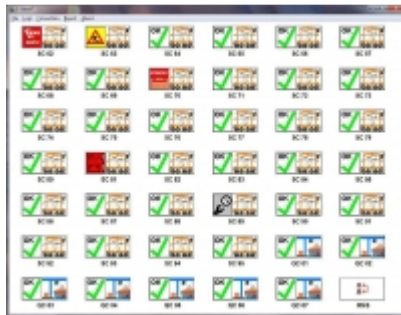




(1)

Messina Lines' Genoa terminal implements new equipment visualisation management tool

28 Mar 2011 - [Terminal Handling \(/news/list/category/terminal_handling\)](/news/list/category/terminal_handling)



Messina Lines' Genoa terminal has recently implemented and E-SM the plant and [equipment visualisation management tool](#)

</images/sized/images/uploads/news/-600x0.jpg>

Screenshot of the E-SMART system.

http://www.porttechnology.org/technical_papers/list/category/terminal_logistics) provided by UK-based International Terminal Solutions Ltd (ITS).

The system installed is the next generation E-SMART system and now has immediate visualisation of equipment status and plant faults using large clear icons. This allows Messina Lines to quickly identify plant issues for immediate remedial action.

Messina Lines E-SMART manages around 60 items of [container handling](#) (http://www.porttechnology.org/technical_papers/list/category/container_handling) equipment including reach stackers (<http://www.porttechnology.org/search/results/5842845fa4ed5bea71d04f00bd5c3efb/>), empty handlers, [RMG cranes](#) (<http://www.porttechnology.org/search/results/7ff60485cf9565e630e2ebadaa227bc0/>), and trucks.

E-SMART is a modular system and can be implemented standalone or with various connections. The system installed at Messina Lines is connected directly to the mobile, allowing the mobile to report equipment faults directly to the E-SMART equipment mimic in the Messina Engineering workshops for action.

E-SMART also provides statistics for KPI data, equipment utilisation and outages, and can be used to and identify repeat issues with fault types or equipment types. Various Management and operational monitors are available remotely allowing terminal operations to view live status and ensure maximum utilisation of equipment is achieved.

ITS will be demonstrating E-SMART at the forthcoming Multimodal 2011 exhibition on 5 to 7 April, Birmingham, UK.